

# 1003 Antelope Trl

Temple, TX | Atascosa Estates | Lot Size: 7,785sqft



## Exterior Design

### SIDING

Sherwin Williams Pure White

### FRONT DOOR

6-Panel Fiberglass Door in Sherwin Williams Iron Ore

### GARAGE

Metal Door with Wifi-Opener in Sherwin Williams Iron Ore

### ROOFING

25-Year, 3-Tab Shingles in Weatherwood

### TRIM

Sherwin Williams Conservative Gray

### SHUTTERS

Sherwin Williams Iron Ore

### WINDOWS

Vinyl Low-E3 Insulated Glass Windows in White

### BRICK

1-Side Acme Brick in Cibolo Trail

## CONSTRUCTION DETAILS

- Borate Pest Treated Advanced Framing
- Post Tension Reinforced Engineered Slab Foundation
- Perforated Exterior Soffits for Attic Ventilation

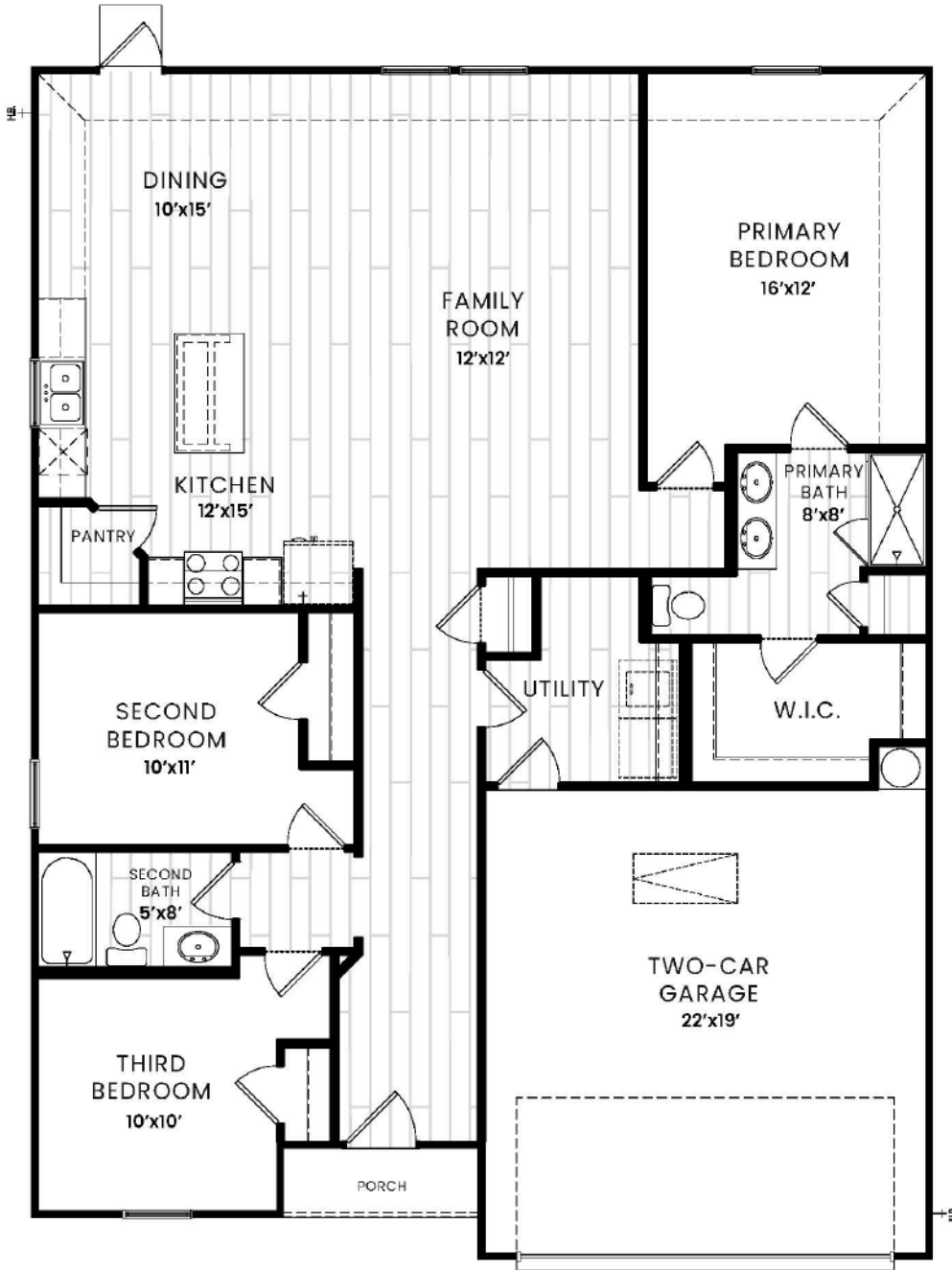
## LANDSCAPING

- Two, 2" Trees in the Front Yard
- Four Decorative Shrubs in the Front Yard
- Bermuda Sod
- 6' Cedar Privacy Fence
- Sprinkler System

Pricing and promotions subject to change without notice. Images are for representational purposes only, and actual product, color, or material may differ or be substituted. Not all images may be shown. Visit [AmeritexHomes.com](http://AmeritexHomes.com) for details.



A Member of Winchener Carlsle Companies



**THE 1600 PLAN**

- 1600 Sqft + 2-Car Garage
- 3 Bed
- 2 Bath

## KITCHEN

- 2cm Quartz Countertops with 4" Quartz Backsplash - [Color Per Collection Package](#)
- Single Handle Pull Down Spray Faucet - [Finish Per Collection Package](#)
- Stainless Steel Undermount Sink
- Garbage Disposal
- Shaker Style Cabinets with 30" Uppers - [Color Per Collection Package](#)
  
- Samsung Stainless Steel Appliance Package:
  - 30" Free Standing Electric Range
  - Over the Range Microwave
  - Dishwasher

## BATHROOM

- Engineered Cultured Marble or Solid Surface Countertop with 4" Cultured Backsplash in White
- Faucet & Fixtures to Match Collection - [Finish Per Collection Package](#)
- 38" Mirrors
- Elongated Commode
- Shaker Style Cabinets - [Color Per Collection Package](#)

## WALLS & FLOORING

- Luxury Vinyl Plank Flooring in Common/Wet Areas (per Floor Plan Designation) - [Color Per Collection Package](#)
- Plush, Wall-to-Wall Carpeting and Pad in Bedrooms/Closets - [Color Per Collection Package](#)
- 3 1/4" Baseboards & 2 1/2" Casing in Sherwin Williams Pure White Semi-Gloss Finish
- 6' 8" Interior Doors in Sherwin Williams Pure White Semi-Gloss Finish - [Door Style Per Collection Package](#)
- Interior Walls in Sherwin Williams Princeton White Flat Finish

## ENERGY SAVINGS FEATURES

- Seer Compliant HVAC System with Programmable Thermostat
- R-50, R-13 & R-22 Fiberglass Insulation
- 2-Part Energy Polyseal of the Entire Building Envelope
- ARC Fault & Ground Fault Protection (per Code Requirements)
- OSB Radiant Barrier Roof Decking
- LED Disc Lighting
- 50-Gallon Tanked Electric Water Heater

There's still time to personalize this beautiful home. Contract this home before the design cutoff, and you will be able to select one of our curated Ameritex Design Collections. ***See collections on the next page.***



## The Farmhouse Collection



◀ Coordinating Black Fixtures and Faucets ▼

▲ Bianca Cararra Quartz Kitchen Countertops

▲ Solid Surface Bathroom Countertops in White



▲ Breeze/White Shaker Cabinets



▲ 333MF Shadow Color LVP Flooring

▲ Grecian Beige 1/2" Carpet with 5# Pad by Shaw

2-Panel Doors with Decorative Panel and Dark Bronze Hardware ▶



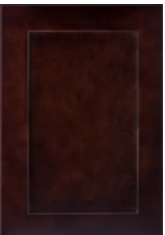
## THE TRADITIONAL COLLECTION



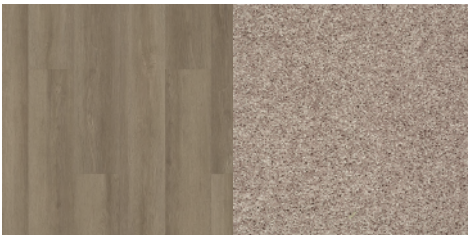
◀ Coordinating Brushed Stainless Fixtures and Faucets ▼

▲ Bianca Cararra Quartz Kitchen Countertops

▲ Solid Surface Bathroom Countertops in White



▲ Espresso/Vista Shaker Cabinets



▲ 333MF Vista Color LVP Flooring

▲ Venture Solid Soft Taupe 1/2" Carpet by Shaw

6-Panel Doors and Brushed Hardware ▶



## THE MODERN COLLECTION



◀ Coordinating Chrome Fixtures and Faucets ▼

▲ Bianca Cararra Quartz Kitchen Countertops

▲ Solid Surface Bathroom Countertops in White



▲ Pebble/Grey Shaker Cabinets



▲ 333MF Pampas Color LVP Flooring

▲ Venture Solid Whisper 1/2" Carpet by Shaw

Shaker Style Interior Doors with Chrome Hardware ▶

