

# 108 Goel St

Greenville, TX | Labein Villas | Lot Size: 5,195 sqft



## Exterior Design

### SIDING

Sherwin Williams Pure White

### FRONT DOOR

6-Panel Fiberglass Door in Sherwin Williams Iron Ore

### GARAGE

Metal Door with Wifi-Opener in Sherwin Williams Elephant Ear

### ROOFING

25-Year, 3-Tab Shingles in Weatherwood

### TRIM

Sherwin Williams Elephant Ear

### SHUTTERS

Sherwin Williams Iron Ore

### WINDOWS

Vinyl Low-E3 Insulated Glass Windows in White

### BRICK

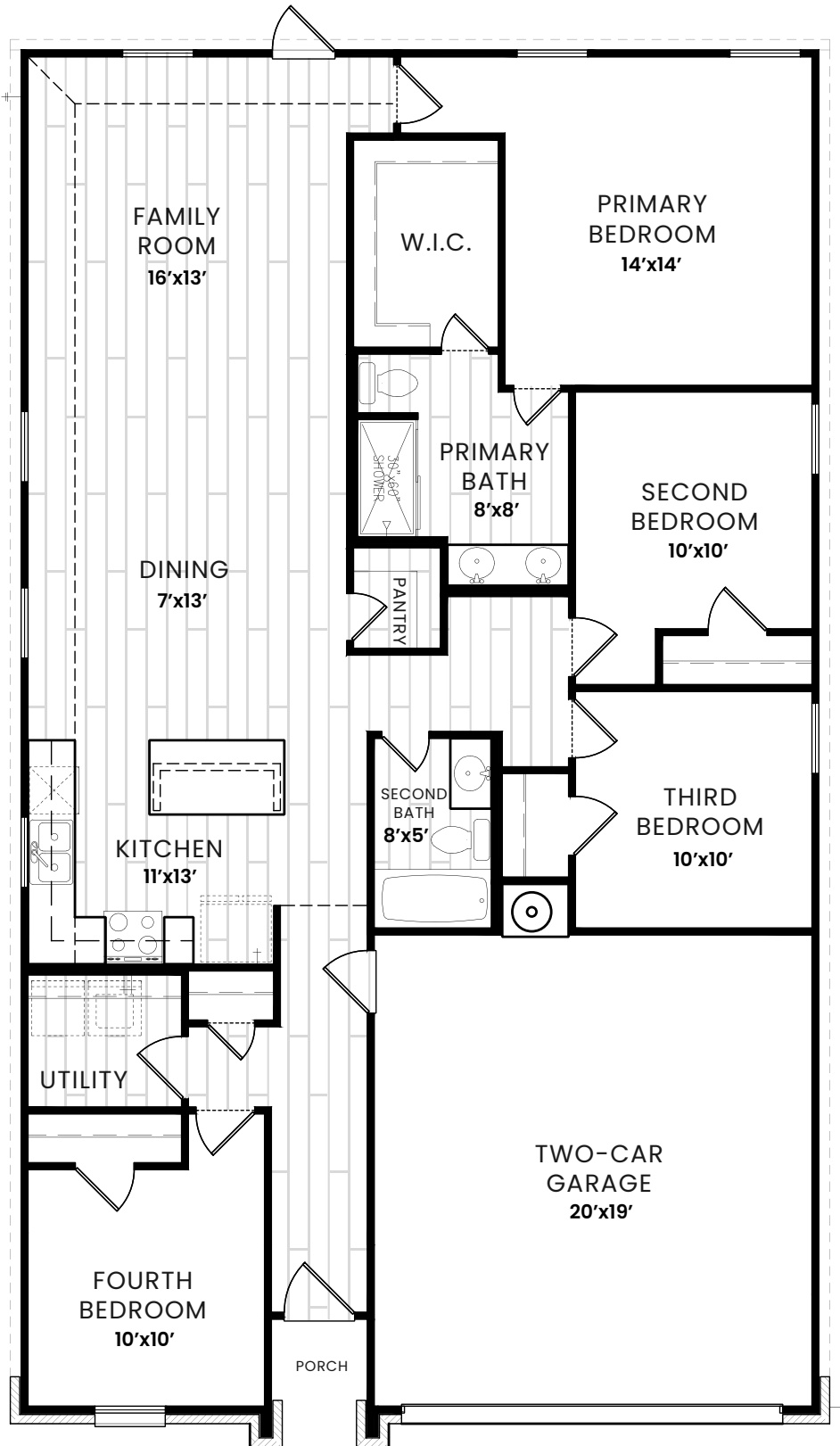
1-Side Acme Brick painted Sherwin Williams Pure White

## CONSTRUCTION DETAILS

- Borate Pest Treated Advanced Framing
- Post Tension Reinforced Engineered Slab Foundation
- Perforated Exterior Soffits for Attic Ventilation

## LANDSCAPING

- Two, 2" Trees in the Front Yard
- Four Decorative Shrubs in the Front Yard
- Bermuda Sod
- 6' Pine Privacy Fence



**THE 1571 PLAN**

- 1571 Sqft +  
2-Car Garage
- 4 Bed
- 2 Bath

**KITCHEN**

- 3cm Granite Countertops with 4" Granite Backsplash - *Color Per Collection Package*
- Single Handle Pull Down Spray Faucet - *Finish Per Collection Package*
- Stainless Steel Undermount Sink
- Garbage Disposal
- Shaker Style Cabinets with 30" Uppers - *Color Per Collection Package*
  
- Samsung Stainless Steel Appliance Package:
  - 30" Free Standing Electric Range
  - Over the Range Microwave
  - Dishwasher

**BATHROOM**

- Engineered Cultured Marble or Solid Surface Countertop with 4" Cultured Backsplash in White
- Faucet & Fixtures to Match Collection - *Finish Per Collection Package*
- 38" Mirrors
- Elongated Commode
- Shaker Style Cabinets - *Color Per Collection Package*

**WALLS & FLOORING**

- Luxury Vinyl Plank Flooring in Common/Wet Areas (per Floor Plan Designation) - *Color Per Collection Package*
- Plush, Wall-to-Wall Carpeting and Pad in Bedrooms/Closets - *Color Per Collection Package*
- 3 1/4" Baseboards & 2 1/2" Casing in Sherwin Williams Pure White Semi-Gloss Finish
- 6' 8" Interior Doors in Sherwin Williams Pure White Semi-Gloss Finish - *Door Style Per Collection Package*
- Interior Walls in Sherwin Williams Princeton White Flat Finish

**ENERGY SAVINGS FEATURES**

- Seer Compliant HVAC System with Programmable Thermostat
- R-50, R-13 & R-22 Fiberglass Insulation
- 2-Part Energy Polyseal of the Entire Building Envelope
- ARC Fault & Ground Fault Protection (per Code Requirements)
- OSB Radiant Barrier Roof Decking
- LED Disc Lighting
- 50-Gallon Tanked Electric Water Heater

**THE TRADITIONAL COLLECTION**

◀ Coordinating Nickel Fixtures and Faucets ▶

6-Panel Doors and ▶ Nickel Hardware

- ▲ New Caledonia Granite Kitchen Countertops
- ▲ White Engineered Quartz/Marble Bathroom Countertops
- ▲ Espresso/Vista Shaker Cabinets
- ▲ BD300 Montreal LVP Flooring
- ▲ Venture Solid Soft Taupe 1/2" Carpet by Shaw

Pricing and promotions subject to change without notice. Images are for representational purposes only, and actual product, color, or material may differ or be substituted. Not all images may be shown. Visit AmeritexHomes.com for details.