

122 Hased St

Greenville, TX | Labein Villas | Lot Size: 7,928 sqft



Exterior Design

SIDING

Sherwin Williams
Requisite Gray

FRONT DOOR

6-Panel Fiberglass Door
in Sherwin Williams
Tricorn Black

GARAGE

Metal Door with
Wifi-Opener in Sherwin
Williams Elephant Ear

ROOFING

25-Year, 3-Tab Shingles in
Weatherwood

TRIM

Sherwin Williams
Elephant Ear

SHUTTERS

Sherwin Williams
Tricorn Black

WINDOWS

Vinyl Low-E3 Insulated
Glass Windows in White

BRICK

1-Side Acme Brick in
Creedmoor

CONSTRUCTION DETAILS

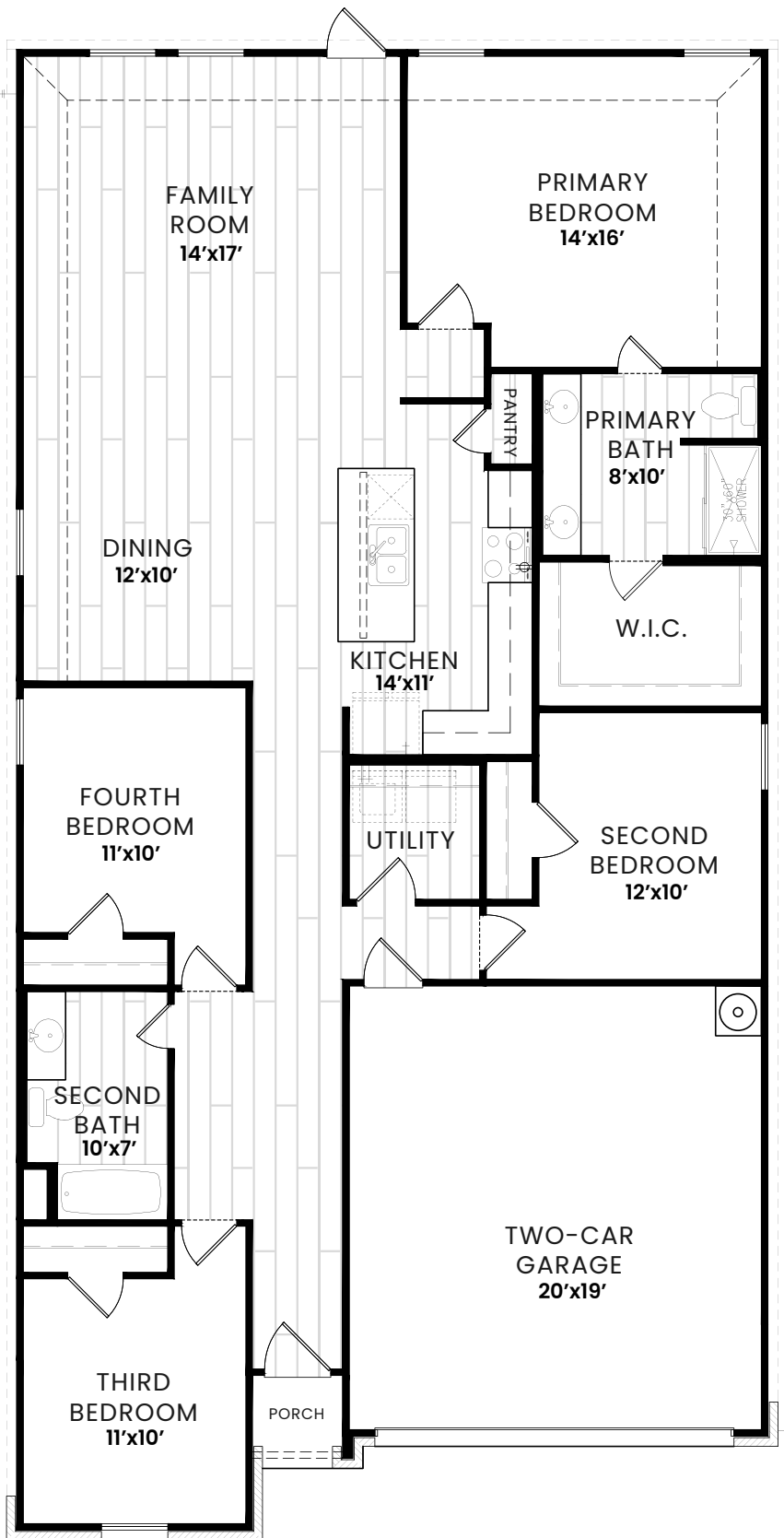
- Borate Pest Treated Advanced Framing
- Post Tension Reinforced Engineered Slab Foundation
- Perforated Exterior Soffits for Attic Ventilation

LANDSCAPING

- Two, 2" Trees in the Front Yard
- Four Decorative Shrubs in the Front Yard
- Bermuda Sod
- 6' Pine Privacy Fence

Pricing and promotions subject to change without notice. Images are for representational purposes only, and actual product, color, or material may differ or be substituted. Not all images may be shown. Visit AmeritexHomes.com for details.





THE 1788 PLAN

- 1788 Sqft + 2-Car Garage
- 4 Bed
- 2 Bath

KITCHEN

- 3cm Granite Countertops with 4" Granite Backsplash - *Color Per Collection Package*
- Single Handle Pull Down Spray Faucet - *Finish Per Collection Package*
- Stainless Steel Undermount Sink
- Garbage Disposal
- Shaker Style Cabinets with 30" Uppers - *Color Per Collection Package*

- Samsung Stainless Steel Appliance Package:
 - 30" Free Standing Electric Range
 - Over the Range Microwave
 - Dishwasher

BATHROOM

- Engineered Cultured Marble or Solid Surface Countertop with 4" Cultured Backsplash in White
- Faucet & Fixtures to Match Collection - *Finish Per Collection Package*
- 38" Mirrors
- Elongated Commode
- Shaker Style Cabinets - *Color Per Collection Package*

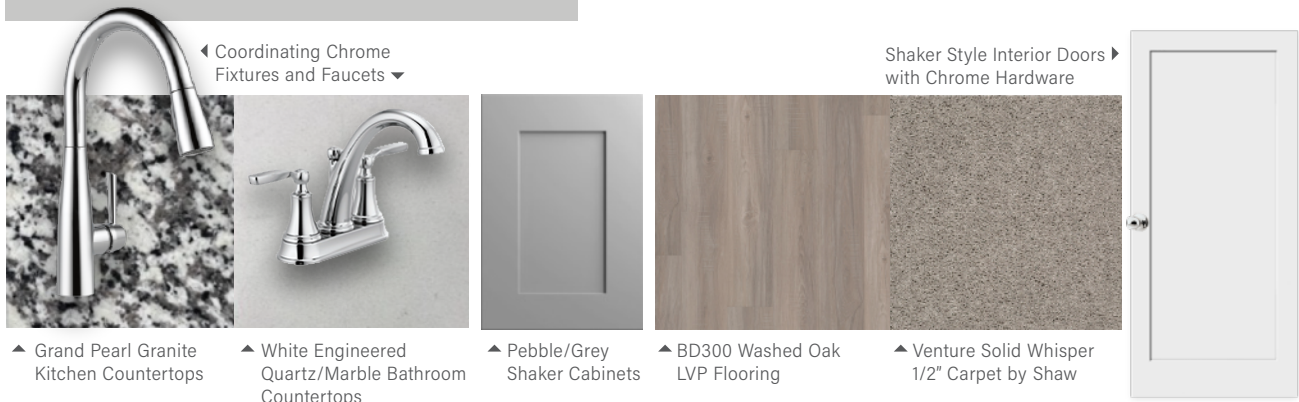
WALLS & FLOORING

- Luxury Vinyl Plank Flooring in Common/Wet Areas (per Floor Plan Designation) - *Color Per Collection Package*
- Plush, Wall-to-Wall Carpeting and Pad in Bedrooms/Closets - *Color Per Collection Package*
- 3 1/4" Baseboards & 2 1/2" Casing in Sherwin Williams Pure White Semi-Gloss Finish
- 6' 8" Interior Doors in Sherwin Williams Pure White Semi-Gloss Finish - *Door Style Per Collection Package*
- Interior Walls in Sherwin Williams Princeton White Flat Finish

ENERGY SAVINGS FEATURES

- Seer Compliant HVAC System with Programmable Thermostat
- R-50, R-13 & R-22 Fiberglass Insulation
- 2-Part Energy Polyseal of the Entire Building Envelope
- ARC Fault & Ground Fault Protection (per Code Requirements)
- OSB Radiant Barrier Roof Decking
- LED Disc Lighting
- 50-Gallon Tanked Electric Water Heater

THE MODERN COLLECTION



◀ Coordinating Chrome Fixtures and Faucets ▶

Shaker Style Interior Doors ▶ with Chrome Hardware

▲ Grand Pearl Granite Kitchen Countertops

▲ White Engineered Quartz/Marble Bathroom Countertops

▲ Pebble/Grey Shaker Cabinets

▲ BD300 Washed Oak LVP Flooring

▲ Venture Solid Whisper 1/2" Carpet by Shaw