

# 426 Rose Ave

Cleburne, TX | Craftsman's Corner | Lot Size: 5,539 sqft



## Exterior Design

### SIDING

Sherwin Williams Latte

### FRONT DOOR

6-Panel Fiberglass Door  
in Sherwin Williams  
Raisin

### GARAGE

Metal Door with  
Wifi-Opener in Sherwin  
Williams Canvas Tan

### ROOFING

25-Year, 3-Tab Shingles in  
Weatherwood

### TRIM

Sherwin Williams Canvas  
Tan

### SHUTTERS

Sherwin Williams  
Raisin

### WINDOWS

Vinyl Low-E3 Insulated  
Glass Windows in White

### BRICK

1-Side Acme Brick in  
Kennewick

## CONSTRUCTION DETAILS

- Borate Pest Treated Advanced Framing
- Post Tension Reinforced Engineered Slab Foundation
- Perforated Exterior Soffits for Attic Ventilation

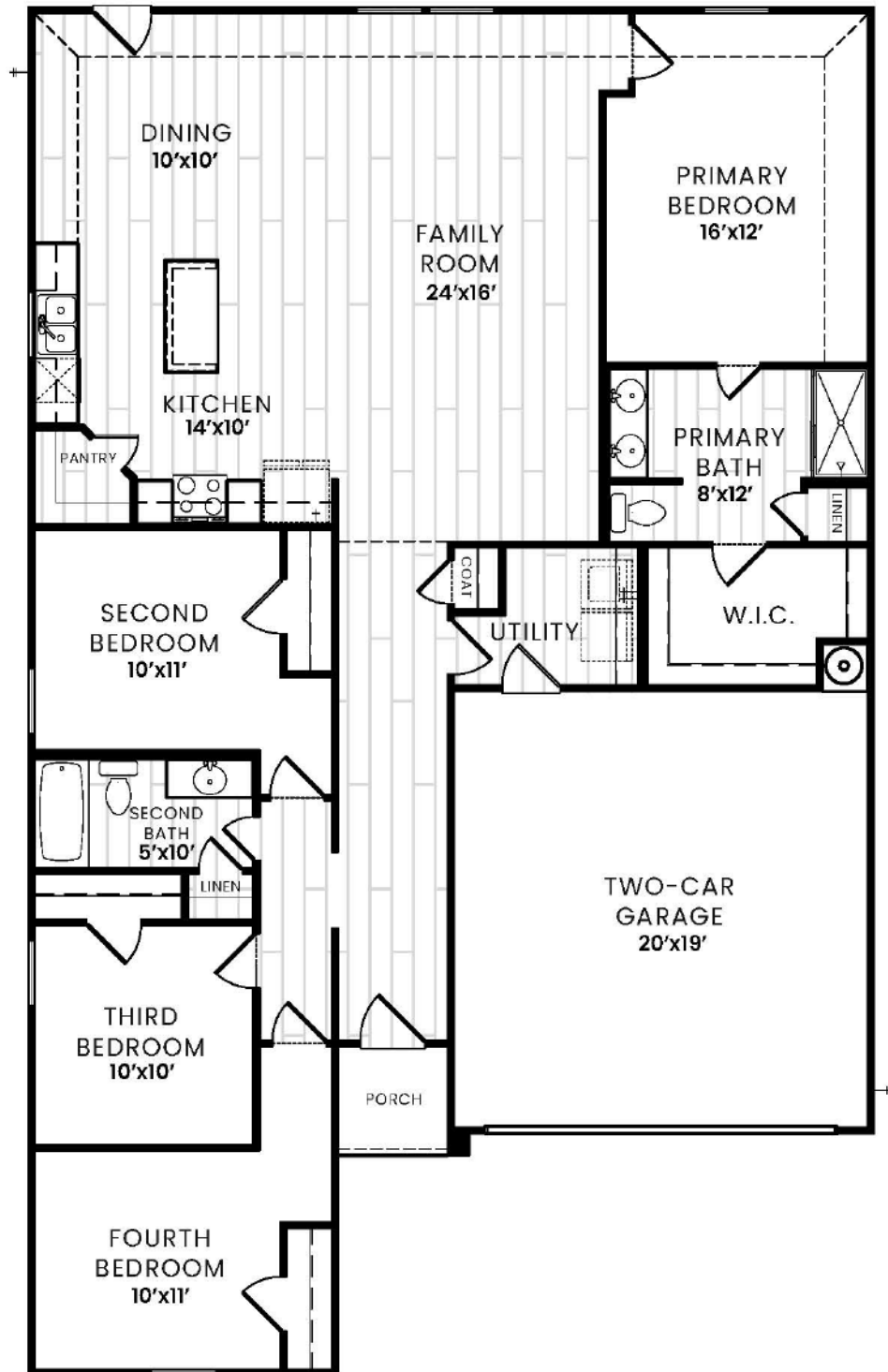
## LANDSCAPING

- One, 2.5" Tree in the Front Yard
- Six Decorative Shrubs in the Front Yard
- Bermuda Sod
- 6' Horizontal Cedar Privacy Fence
- Sprinkler System

Pricing and promotions subject to change without notice. Images are for representational purposes only, and actual product, color, or material may differ or be substituted. Not all images may be shown. Visit [AmeritexHomes.com](https://www.AmeritexHomes.com) for details.



A Member of Winchester Carlsle Companies



**THE 1763 PLAN**

- 1763 Sqft + 2-Car Garage
- 4 Bed
- 2 Bath

**KITCHEN**

- 2cm Quartz Countertops with 4" Quartz Backsplash - *Color Per Collection Package*
- Single Handle Pull Down Spray Faucet - *Finish Per Collection Package*
- Stainless Steel Undermount Sink
- Garbage Disposal
- Shaker Style Cabinets with 30" Uppers - *Color Per Collection Package*
  
- Samsung Stainless Steel Appliance Package:
  - 30" Free Standing Electric Range
  - Over the Range Microwave
  - Dishwasher

**BATHROOM**

- Engineered Cultured Marble or Solid Surface Countertop with 4" Cultured Backsplash in White
- Faucet & Fixtures to Match Collection - *Finish Per Collection Package*
- 38" Mirrors
- Elongated Commode
- Shaker Style Cabinets - *Color Per Collection Package*

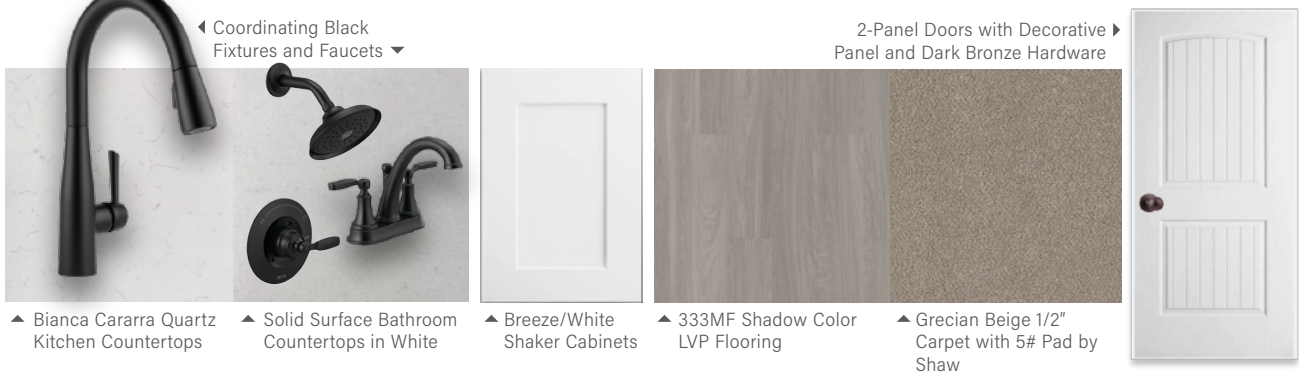
**WALLS & FLOORING**

- Luxury Vinyl Plank Flooring in Common/Wet Areas (per Floor Plan Designation) - *Color Per Collection Package*
- Plush, Wall-to-Wall Carpeting and Pad in Bedrooms/Closets - *Color Per Collection Package*
- 3 1/4" Baseboards & 2 1/2" Casing in Sherwin Williams Pure White Semi-Gloss Finish
- 6' 8" Interior Doors in Sherwin Williams Pure White Semi-Gloss Finish - *Door Style Per Collection Package*
- Interior Walls in Sherwin Williams Princeton White Flat Finish

**ENERGY SAVINGS FEATURES**

- Seer Compliant HVAC System with Programmable Thermostat
- R-50, R-13 & R-22 Fiberglass Insulation
- 2-Part Energy Polyseal of the Entire Building Envelope
- ARC Fault & Ground Fault Protection (per Code Requirements)
- OSB Radiant Barrier Roof Decking
- LED Disc Lighting
- 50-Gallon Tanked Electric Water Heater

**The Farmhouse Collection**



◀ Coordinating Black Fixtures and Faucets ▶

2-Panel Doors with Decorative Panel and Dark Bronze Hardware ▶

▲ Bianca Cararra Quartz Kitchen Countertops

▲ Solid Surface Bathroom Countertops in White

▲ Breeze/White Shaker Cabinets

▲ 333MF Shadow Color LVP Flooring

▲ Grecian Beige 1/2" Carpet with 5# Pad by Shaw

Pricing and promotions subject to change without notice. Images are for representational purposes only, and actual product, color, or material may differ or be substituted. Not all images may be shown. Visit AmeritexHomes.com for details.