

# 433 Rose Ave

Cleburne, TX | Craftsman's Corner | Lot Size: 7,312 sqft



## Exterior Design

### SIDING

Sherwin Williams Sage Green

### FRONT DOOR

6-Panel Fiberglass Door in Sherwin Williams Rockweed

### GARAGE

Metal Door with Wifi-Opener in Sherwin Williams Classic Light Buff

### ROOFING

25-Year, 3-Tab Shingles in Weatherwood

### TRIM

Sherwin Williams Classic Light Buff

### SHUTTERS

Sherwin Williams Rockweed

### WINDOWS

Vinyl Low-E3 Insulated Glass Windows in White

### BRICK

1-Side Acme Brick in Sonoran Desert

## CONSTRUCTION DETAILS

- Borate Pest Treated Advanced Framing
- Post Tension Reinforced Engineered Slab Foundation
- Perforated Exterior Soffits for Attic Ventilation

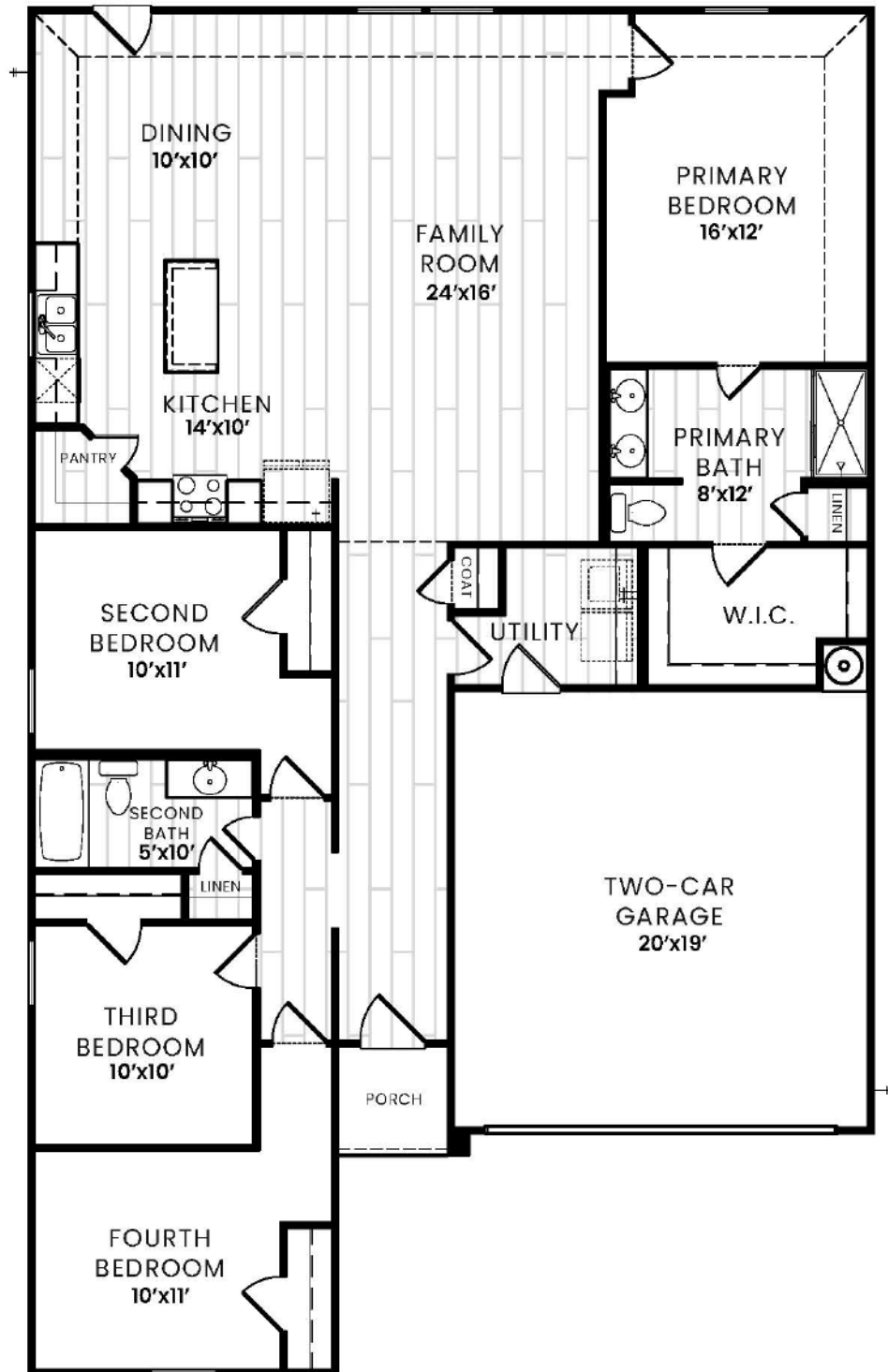
## LANDSCAPING

- One, 2.5" Tree in the Front Yard
- Six Decorative Shrubs in the Front Yard
- Bermuda Sod
- 6' Horizontal Cedar Privacy Fence
- Sprinkler System

Pricing and promotions subject to change without notice. Images are for representational purposes only, and actual product, color, or material may differ or be substituted. Not all images may be shown. Visit [AmeritexHomes.com](http://AmeritexHomes.com) for details.



A Member of Winchester Carlsle Companies



**THE 1763 PLAN**

- 1763 Sqft + 2-Car Garage
- 4 Bed
- 2 Bath

**KITCHEN**

- 3cm Granite Countertops with 4" Granite Backsplash - *Color Per Collection Package*
- Single Handle Pull Down Spray Faucet - *Finish Per Collection Package*
- Stainless Steel Undermount Sink
- Garbage Disposal
- Shaker Style Cabinets with 30" Uppers - *Color Per Collection Package*
- Samsung Stainless Steel Appliance Package:
  - 30" Free Standing Electric Range
  - Over the Range Microwave
  - Dishwasher

**BATHROOM**

- Engineered Cultured Marble or Solid Surface Countertop with 4" Cultured Backsplash in White
- Faucet & Fixtures to Match Collection - *Finish Per Collection Package*
- 38" Mirrors
- Elongated Commode
- Shaker Style Cabinets - *Color Per Collection Package*

**WALLS & FLOORING**

- Luxury Vinyl Plank Flooring in Common/Wet Areas (per Floor Plan Designation) - *Color Per Collection Package*
- Plush, Wall-to-Wall Carpeting and Pad in Bedrooms/Closets - *Color Per Collection Package*
- 3 1/4" Baseboards & 2 1/2" Casing in Sherwin Williams Pure White Semi-Gloss Finish
- 6' 8" Interior Doors in Sherwin Williams Pure White Semi-Gloss Finish - *Door Style Per Collection Package*
- Interior Walls in Sherwin Williams Princeton White Flat Finish

**ENERGY SAVINGS FEATURES**

- Seer Compliant HVAC System with Programmable Thermostat
- R-50, R-13 & R-22 Fiberglass Insulation
- 2-Part Energy Polyseal of the Entire Building Envelope
- ARC Fault & Ground Fault Protection (per Code Requirements)
- OSB Radiant Barrier Roof Decking
- LED Disc Lighting
- 50-Gallon Tanked Electric Water Heater

**THE TRADITIONAL COLLECTION**

◀ Coordinating Nickel Fixtures and Faucets ▶

6-Panel Doors and ▶ Nickel Hardware

- ▲ New Caledonia Granite Kitchen Countertops
- ▲ White Engineered Quartz/Marble Bathroom Countertops
- ▲ Espresso/Vista Shaker Cabinets
- ▲ BD300 Montreal LVP Flooring
- ▲ Venture Solid Soft Taupe 1/2" Carpet by Shaw

Pricing and promotions subject to change without notice. Images are for representational purposes only, and actual product, color, or material may differ or be substituted. Not all images may be shown. Visit AmeritexHomes.com for details.