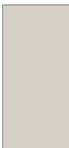





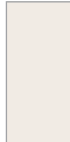



440 Rose Ave

Cleburne, TX | Craftsman's Corner | Lot Size: 11,902 sqft



Exterior Design

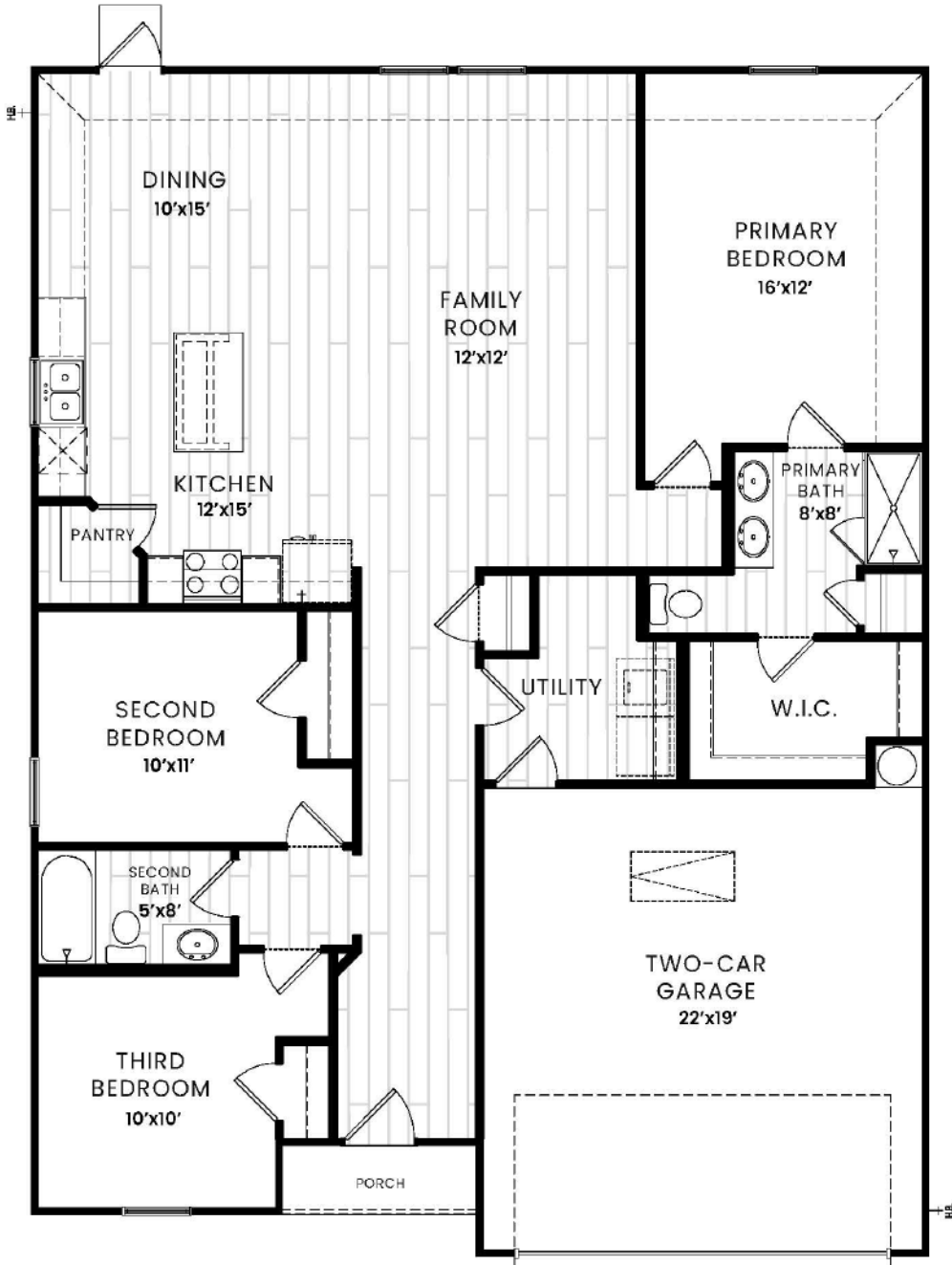
 SIDING Sherwin Williams City Loft	 FRONT DOOR 6-Panel Fiberglass Door in Sherwin Williams Raisin	 GARAGE Metal Door with Wifi-Opener in Sherwin Williams Acier	 ROOFING 25-Year, 3-Tab Shingles in Weatherwood
 TRIM Sherwin Williams Acier	 SHUTTERS Sherwin Williams Raisin	 WINDOWS Vinyl Low-E3 Insulated Glass Windows in White	 BRICK 1-Side Acme Brick in Mocha Brown Antique

CONSTRUCTION DETAILS

- Borate Pest Treated Advanced Framing
- Post Tension Reinforced Engineered Slab Foundation
- Perforated Exterior Soffits for Attic Ventilation

LANDSCAPING

- One, 2.5" Tree in the Front Yard
- Six Decorative Shrubs in the Front Yard
- Bermuda Sod
- 6' Horizontal Cedar Privacy Fence
- Sprinkler System



THE 1600 PLAN

- 1600 Sqft + 2-Car Garage
- 3 Bed
- 2 Bath

KITCHEN

- 2cm Quartz Countertops with 4" Quartz Backsplash - *Color Per Collection Package*
- Single Handle Pull Down Spray Faucet - *Finish Per Collection Package*
- Stainless Steel Undermount Sink
- Garbage Disposal
- Shaker Style Cabinets with 30" Uppers - *Color Per Collection Package*

- Samsung Stainless Steel Appliance Package:
 - 30" Free Standing Electric Range
 - Over the Range Microwave
 - Dishwasher

BATHROOM

- Engineered Cultured Marble or Solid Surface Countertop with 4" Cultured Backsplash in White
- Faucet & Fixtures to Match Collection - *Finish Per Collection Package*
- 38" Mirrors
- Elongated Commode
- Shaker Style Cabinets - *Color Per Collection Package*

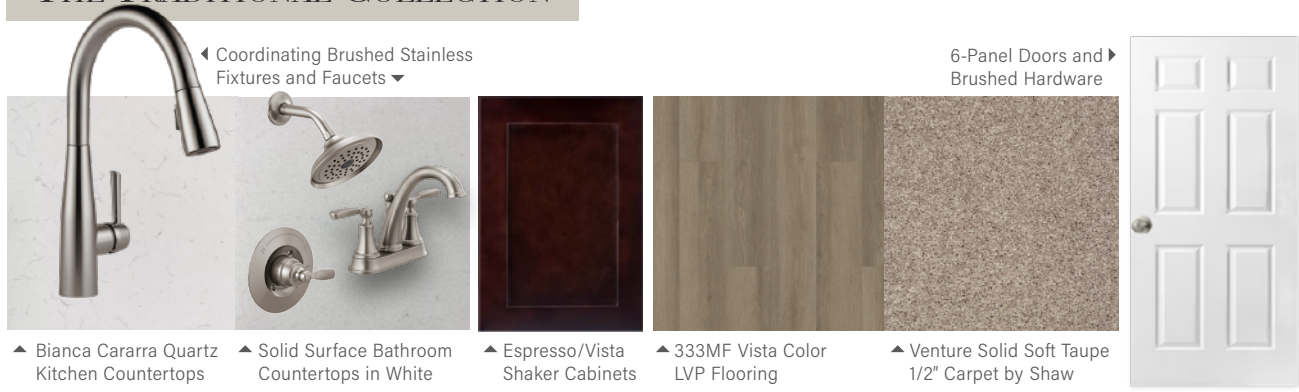
WALLS & FLOORING

- Luxury Vinyl Plank Flooring in Common/Wet Areas (per Floor Plan Designation) - *Color Per Collection Package*
- Plush, Wall-to-Wall Carpeting and Pad in Bedrooms/Closets - *Color Per Collection Package*
- 3 1/4" Baseboards & 2 1/2" Casing in Sherwin Williams Pure White Semi-Gloss Finish
- 6' 8" Interior Doors in Sherwin Williams Pure White Semi-Gloss Finish - *Door Style Per Collection Package*
- Interior Walls in Sherwin Williams Princeton White Flat Finish

ENERGY SAVINGS FEATURES

- Seer Compliant HVAC System with Programmable Thermostat
- R-50, R-13 & R-22 Fiberglass Insulation
- 2-Part Energy Polyseal of the Entire Building Envelope
- ARC Fault & Ground Fault Protection (per Code Requirements)
- OSB Radiant Barrier Roof Decking
- LED Disc Lighting
- 50-Gallon Tanked Electric Water Heater

THE TRADITIONAL COLLECTION



◀ Coordinating Brushed Stainless Fixtures and Faucets ▶

6-Panel Doors and ▶ Brushed Hardware

▲ Bianca Cararra Quartz Kitchen Countertops ▲ Solid Surface Bathroom Countertops in White ▲ Espresso/Vista Shaker Cabinets ▲ 333MF Vista Color LVP Flooring ▲ Venture Solid Soft Taupe 1/2" Carpet by Shaw

Pricing and promotions subject to change without notice. Images are for representational purposes only, and actual product, color, or material may differ or be substituted. Not all images may be shown. Visit AmeritexHomes.com for details.